

LITHIUM THIONYL CHLORIDE CELL

Technical Overview

Open Circuit Voltage (25°C)	3.67 V
Rated Discharge Current	200 mA
Rated Capacity	20 Ah
Maximum Continuous Current	300 mA
Cell Diameter (nominal)	32.8 mm
Cell Length (nominal)	127.0 mm
Cell Weight	220.0 g
Lithium Weight	7.2 g
Self Discharge	2% per year at 25°C
Operating Temperature	+70°C to +200°C +158°F to +392°F

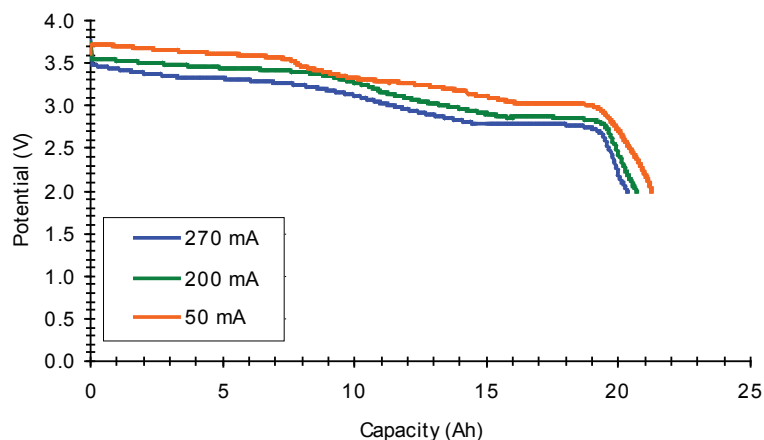
Key Features:

- Primary chemistry (non-rechargeable)
- Moderate rate capability
- Stainless steel container
- Hermetic glass-to-metal sealing
- Built to withstand extreme shock and vibration
- Wide operating temperature range as low as +70°C and up to +200°C
- Low self discharge rate (2% per year at 25°C)
- Restricted for transportation (Class 9)
- Custom terminations available

Main Applications:

- Downhole oil & gas
 - Measurement While Drilling (MWD)
 - Logging While Drilling (LWD)
- Military devices

Discharge at 200°C



NOTICE: The information on this datasheet is for single cells only. Please consult with Electrochem if you are interested in additional information. The information in this document is subject to change without notice and does not constitute a warranty of performance.